



Summit 5000 & Oracle E-Business Suite

Summit 5000 Operational data sits in the same Oracle database as the Oracle E-Business Suite (EBS) providing you with a true single solution for your organisation. Your operational users have their project centric view of information provided by Summit 5000 while your financial users have Oracle EBS to control and manage the financial side of the business.

Single Source Data Management

The days of interfaces and electronic feeds from operational to financial applications are gone. Summit 5000 and Oracle EBS share the same data that is stored and managed in the Oracle database environment. No data duplication, re-keying of information or data feeds strengthens the integrity of your information.

A single data source means the information users see is the same whether they are Summit 5000 or Oracle users and they are seeing the latest version of the data. Report generation is made easier as there is no need to create and manage extracts and loads of data from Summit 5000 to Oracle to consolidate the information.

Roles and Segregation of Duties

The role based views of information provided by Summit 5000 Operational and Oracle EBS does not restrict user access to data. This single solution gives you all the flexibility and security provided by Oracle EBS for financial control while allowing your operational users to manage their projects with views of information from Summit 5000 meaningful to them. Access to information is still controlled by the owners of the data and roles can include both Summit 5000 and Oracle views of information.

Oracle General Ledger

Oracle General Ledger is a comprehensive financial management solution that dramatically enhances financial controls, data collection, information access, and financial reporting throughout your enterprise. Oracle General Ledger is part of the Oracle E-Business Suite, an integrated set of applications that are engineered to work together. Oracle General Ledger works seamlessly with Summit 5000 to deliver best value to both your operational and financial users.

Access to Information

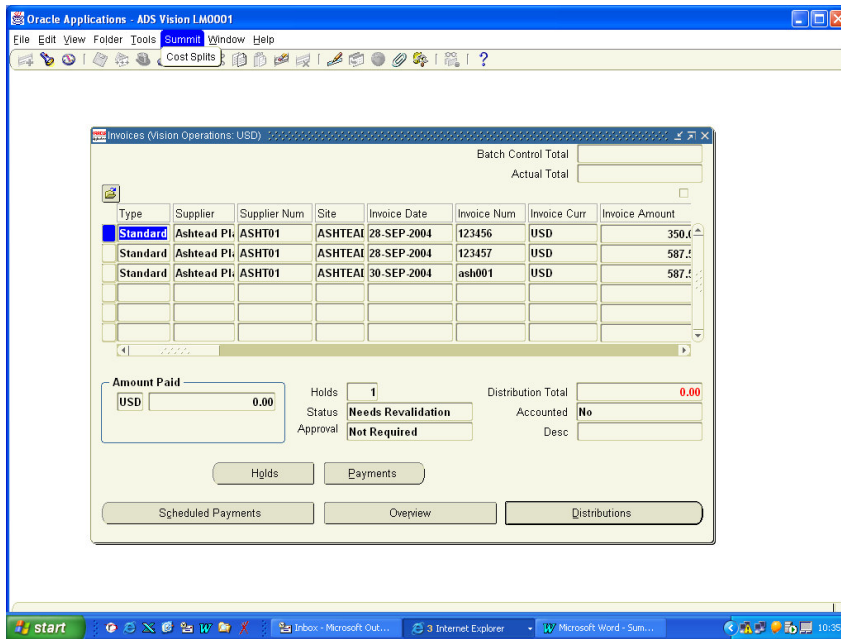
The Oracle General Ledger allows you to use Oracle's inquiry functionality to drill from summary account balances to detail balances and complete journal entries. In addition, you can drill to complete views of any underlying sub-ledger transactions for further accounting entry analysis. From Oracle Payables users can view the cost splits from invoices originally matched in Summit 5000 Operational while Summit 5000 users can see the status of all invoice transactions in Oracle.





Oracle Payables

Oracle Payables, an expenditure management tool, streamlines your procure-to-pay process while providing strong financial controls and strategic financial information. Oracle Payables is part of the Oracle E-Business Suite that works together with Summit 5000 Operational. From an invoice inquiry in Oracle, users are able to drill to Summit 5000 to view the cost splits of every invoice.



Streamline Accounts Payable Processing

Streamlining routine accounts payable transactions, such as invoice processing and supplier inquiries, dramatically reduces procurement cycle times and lowers administrative costs. Free your accounts payable professionals from administrative tasks, so they can spend more time on higher value-added activities like audit, control, and expenditure analysis.

Oracle Receivables

Oracle Receivables, an invoicing and collections management application, streamlines your order-to-cash process while providing strong financial controls and strategic financial information. Oracle Receivables works with Summit 5000 in the same way as Oracle Payables does allowing users to drill to Summit 5000 to view the revenue splits of invoices.

Streamline Accounts Receivable Processing

Streamlining routine accounts receivables activities, such as invoicing, tax calculation, receipt application, collections, and revenue recognition, dramatically reduces settlement cycle times and lowers administrative costs. Free your accounts receivable professionals from administrative tasks so they can spend more time on value-added activities like payment terms analysis, credit management, receipt analysis, and revenue management.